



kern iMpres

Monochrome
Inkjet Press

Rethinkjet. Make a better impression.



A Better Press from Better Technology

All we ask is that you take a look inside the Kern iMpres. The difference is obvious. It starts with an elegant simplicity driven by Graph-Tech engineered print bars and the Swiss build quality you expect from Kern. You can't help but notice the unique paper flow that enables Simplex, Duplex, even Duplex and MICR all in the same print engine enclosure. The difference in floorspace required is dramatic. When you look a little closer, you see the advanced fluid controls that drive consistency in print quality, the best uptimes, and better economics.

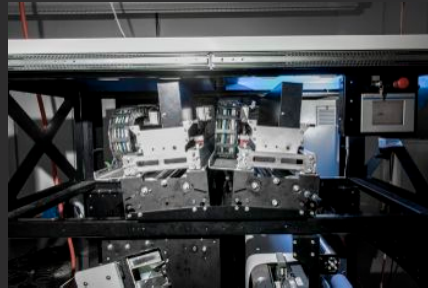
Better Economics

Make no mistake. The Kern iMpres sets a new standard for cost efficiency in production printing. Let's start with "NO CLICK" pricing that eliminates the biggest variable in your production costs today. Then, let's add advanced ink and head management that drives ink waste to less than 5% and enables print heads to last a year and compare that to the cost of toner, developer, fuser agents and intensive service. We invite you to compare. Cost, Quality, and Speed. Finally you can have all three!



Productive Capacity

The Kern iMpres produces up to 492 duplex feet per minute. That translates to over 2,000 letter pages every 60 seconds of predictable, reliable production with the best system uptimes in the industry.



Efficiency

The difference is obvious from your first look at the iMpres. Simplex or Duplex printing in a single press engine means more output per valuable square foot of production floorspace. iMpres is the OEE leader.



Quality

The Kern iMpres has quality engineered-in. Rich solids and halftones in 1200 dpi quality result from advanced ink and head management systems. And, with better technology comes better head life, ink yield and consistency.

kern iMpres Monochrome Inkjet Press

Specifications

Print Width:	17.5"	22"	26.4"	30.8"
	(446 mm)	(558 mm)	(670 mm)	(783 mm)
Print Speed:	246 ft/min (75 m/min) or 492 ft/min (150 m/min)			
Configuration:	Simplex or Duplex			
Print Resolution:	600 x 600 dpi native, #1200 x #1200 perceived			
Greyscale Print:	4 level @ 164 ft/min, 3 level @ 75 ft/min & 492 ft/min			
Drop Size:	4 level greyscale = 5pl, 8pl, 12pl & 18pl			
Footprint:	8.2 ft deep x 5.58 ft high x 5.58 ft long			
Ink Type:	Aqueous Pigment & Dye			

AVAILABLE OPTIONS

Digital Front End:	Open Source integration with all leading OEM DEF's & IPDS
Pre / Post:	Fully integrated solutions with Kern R2R, R2F, & R2C
Primer:	Integrated primer systems for difficult to print substrates
Web Cleaning:	In-feed web cleaner available, ideal for high speed applications
Duplex Upgrade:	All simplex systems can be upgraded to duplex in one unit
Speed Option:	All lower speed systems can be upgraded to high speed
MICR Inks:	Aqueous MICR ink set available for check & magnetic readable print
Warranty:	One year on replacement parts
Click Charge:	NO CLICK

Total Cost per Page: Example: A print job with 10% coverage printing at 492 ft/min on a 22" print width for 8.5 x 11", 2-up, working 2 x 8hr shifts, including supplies and iMpres capital value amortized over 5 years.

\$0.0027 / page

kern

document output management

Kern USA
3940 Gantz Road, Suite A
Grove City, OH 43123-4845
U.S.A.

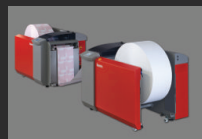
Phone: 1.888.KERNINC

Phone: 614.491.9521

Fax: 614.491.9529

E-Mail: info@kerninc.com

The Kern iMpres Works Seamlessly In-line With:



Roll to Roll
K100 Unwinder and
K110 Rewinder



Roll-to-Fold
K146 High Capacity
Folding System



Roll-to-Cut
K130 High Speed
Rotary Cutting System



Roll-to-Book